

# CL1000 CoaguDx System

for Point of Care



Wuhan EasyDiagnosis Biomedicine Co., Ltd.

Web: [www.easydiagnosis.com](http://www.easydiagnosis.com)  
Email: [info@easydiagnosis.com](mailto:info@easydiagnosis.com) Tel: 0086-27-65523649, 0086-27-65524011  
Add: No.77 Jiulong Middle Rd, East Lake Hi-Tech Development Zone, Wuhan, 430074  
Hubei, P.R. China



Wuhan EasyDiagnosis Biomedicine Co., Ltd.

# Accurate Detection for Coagulation Testing

## Handheld POCT Device

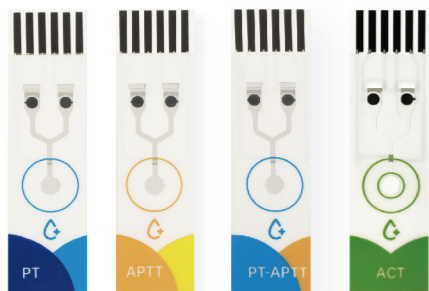
### 1.Features

- **User-friendly operation:** One drop blood testing, support fresh whole blood or anticoagulant blood sample, easy coagulation function monitoring.
- **Super compact design:** Handheld size, focus on POCT, available in different scenarios: home use or hospital test etc.
- **Trustworthy detection:** Electrochemical method, quality control monitoring+calibration, safeguard your test accuracy.
- **Flexible cost management:** Single use test strip for multiple parameter, no onboard shelf life limitation.

### 2.Instrument Specifications

- **Method:** Electrochemistry
- **Storage capacity:** 300 results
- **Display:** 3.5-inch touch screen
- **Dimension:** 145mm\*75mm\*30mm
- **Weight:** 195g
- **Battery:** 2500mAh
- **Charger:** USB-Type C, CL1000 Station
- **Communication:** Bluetooth, DMS software, Type C port

### 3.Reagent



#### Test Strip Type:

**Regular type:** Fingertip blood or anticoagulant blood

**One step type:** Anticoagulant blood only

Model	Type	Specifications	Reportable Range
PT CoaguDx Test Strip	R/O	12 strips/kit	PT: 5-90s
APTT CoaguDx Test Strip			INR: 0.5-10
PT/APTT CoaguDx Dual Test Strip			APTT: 20-300s
ACT CoaguDx Test Strip	R	12 strips/kit	20-1200s

TT\*, FIB\* (\* In development)



#### Product

CoaguDx Quality Control

#### Specifications

6 vials/kit  
(L1: 3\*1 mL/vial, L2: 3\*1 mL/vial)



#### Product

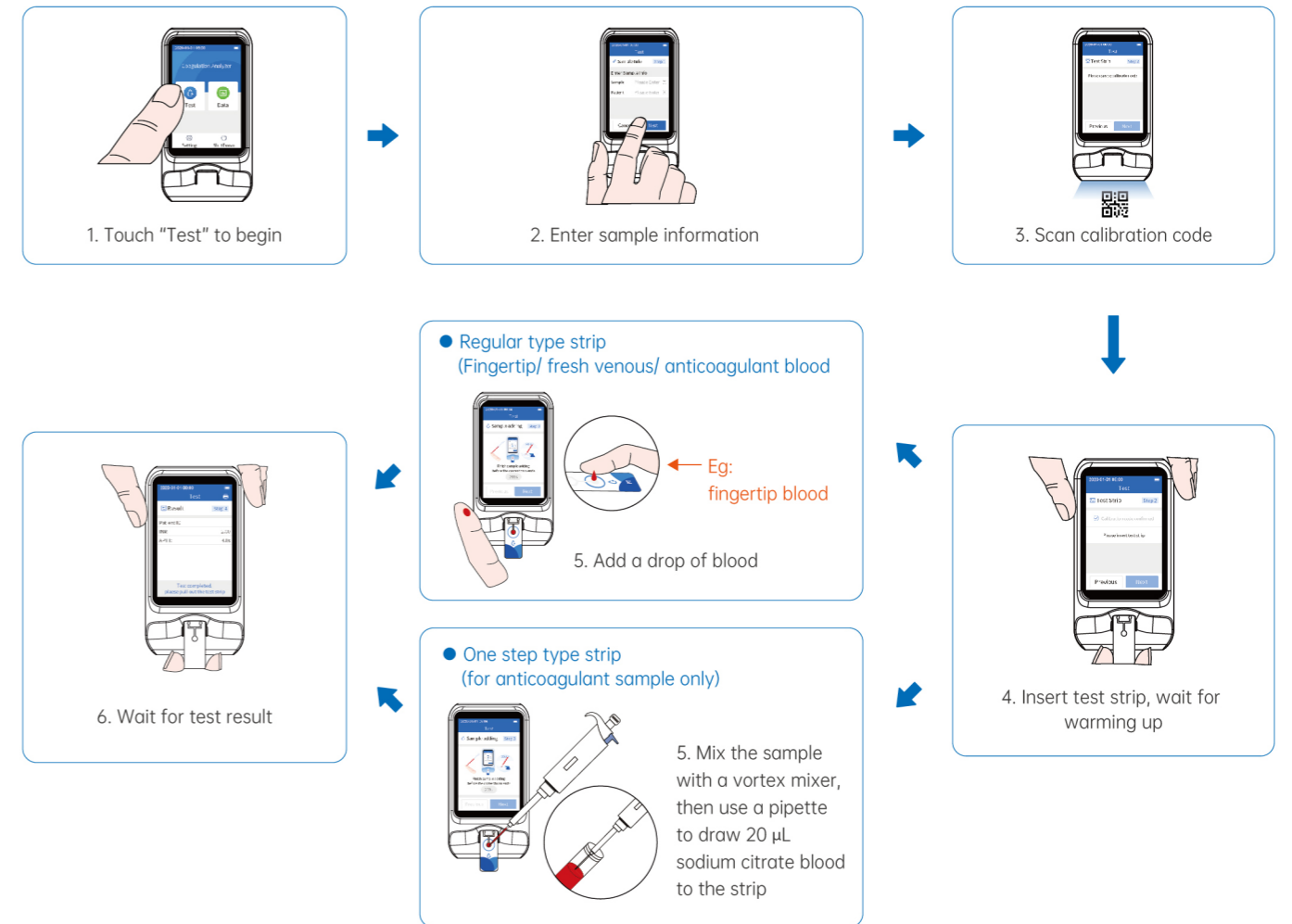
CoaguDx Calcium Solution

#### Specifications

2 vials/kit, 2 mL/vial

\*For anticoagulant sample

### 4.Operation



### CL1000 Station

- 7-inch touch screen, more intuitive operation
- Intelligent interconnection, automatic data backup
- HL7 protocol, support LIS/HIS connection
- Support quality control charts
- Built in thermal printer, automatic printing
- As charging station for CL1000

