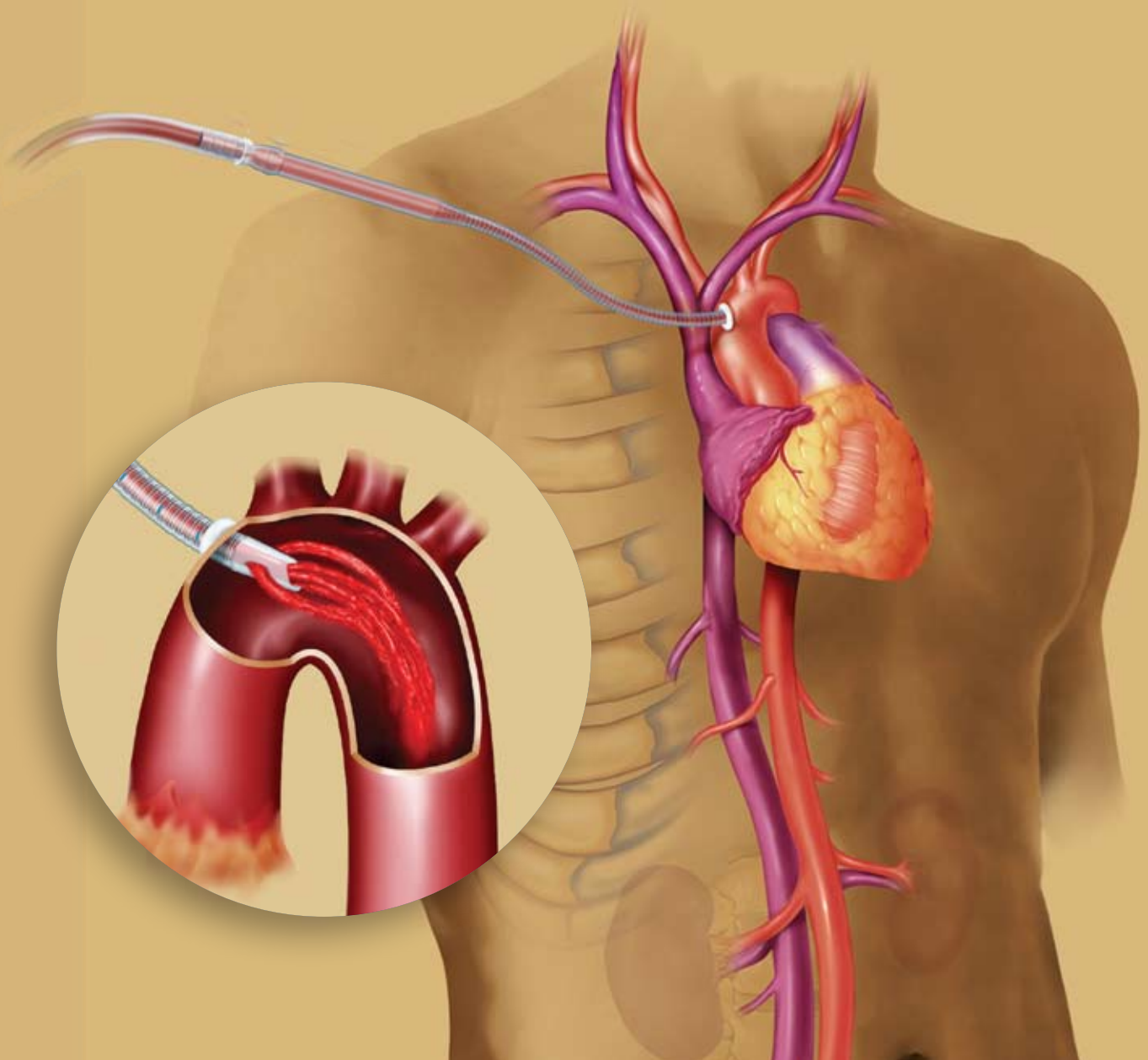


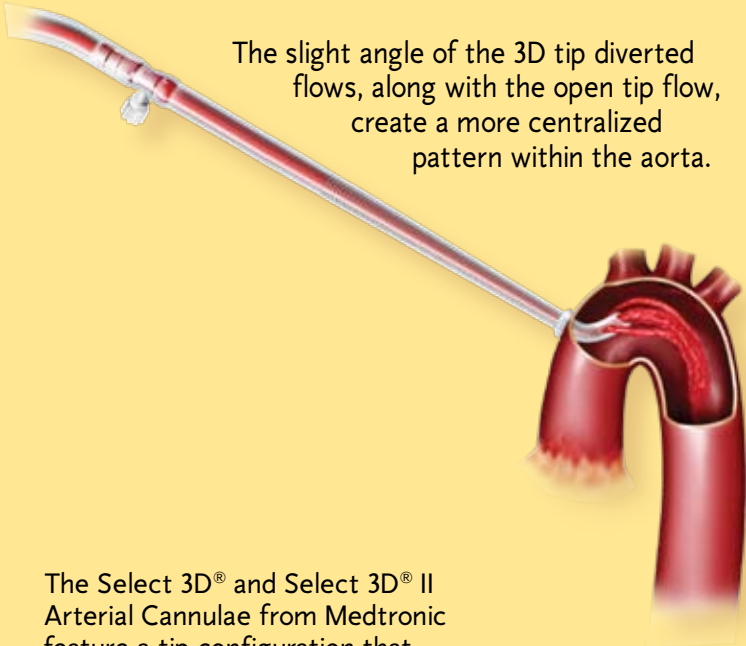
# SELECT 3D<sup>®</sup> AND EOPA 3D<sup>™</sup>

Arterial Cannulae

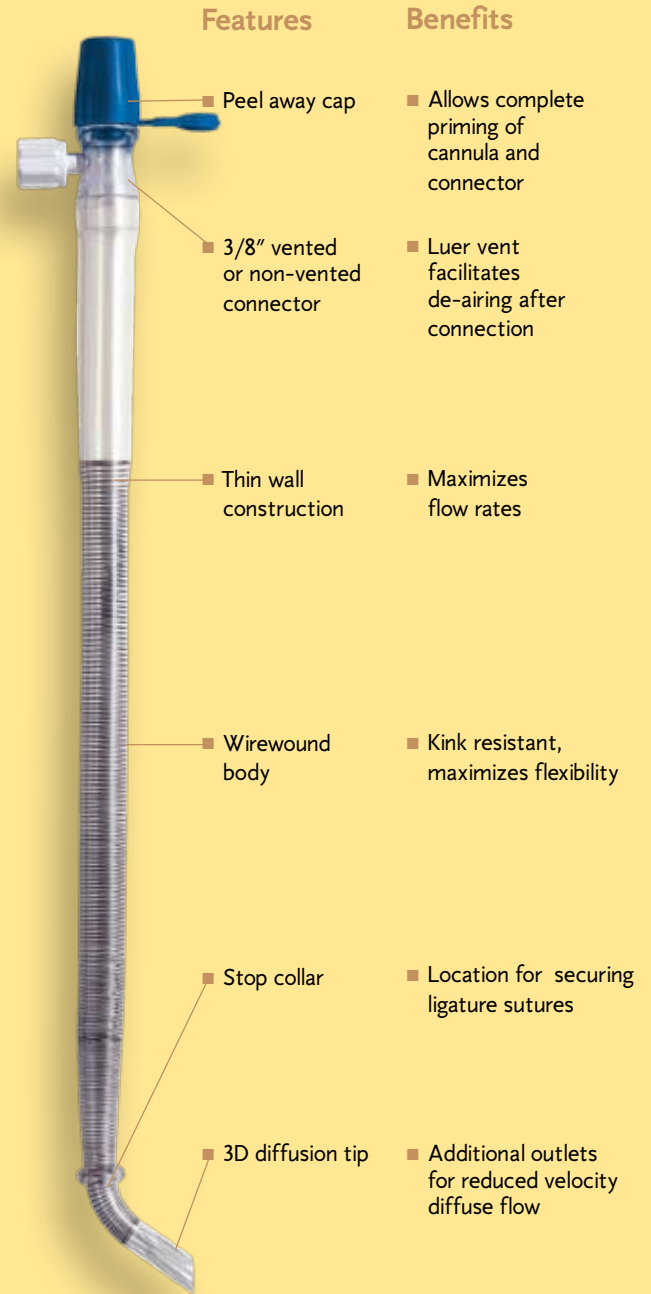


3D multiport tip for reduced velocity diffuse flow

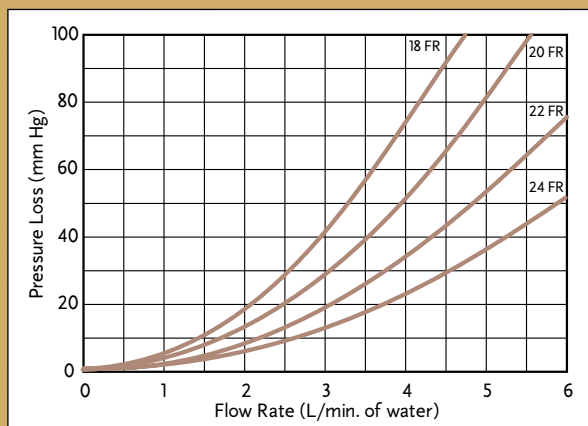
# SELECT 3D® AND SELECT 3D® II ARTERIAL CANNULAE



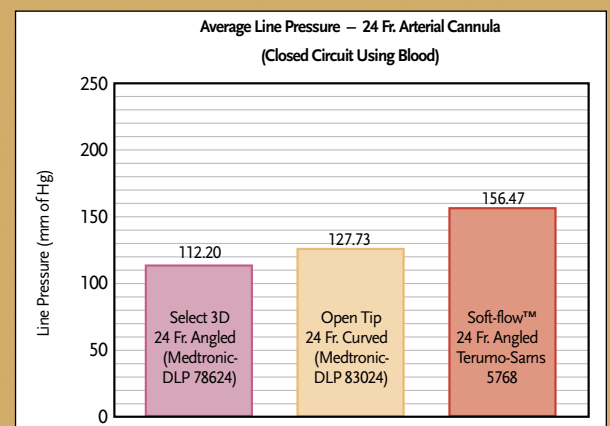
The Select 3D® and Select 3D® II Arterial Cannulae from Medtronic feature a tip configuration that diffuses the flow through multiple outlets. This unique tip design provides reduced velocity with one central and three diverted flow streams.



## Select 3D® and Select 3D® II Arterial Cannulae



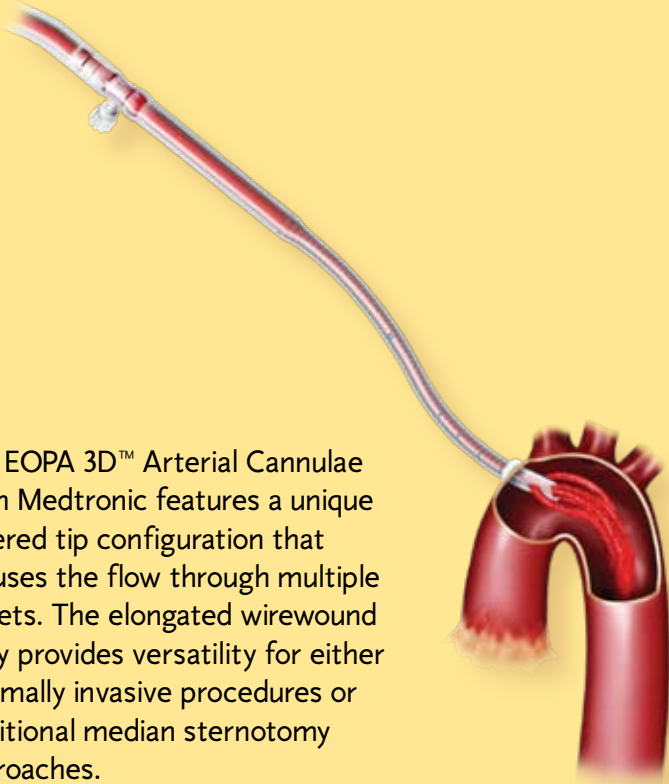
## Flow Performance Comparison



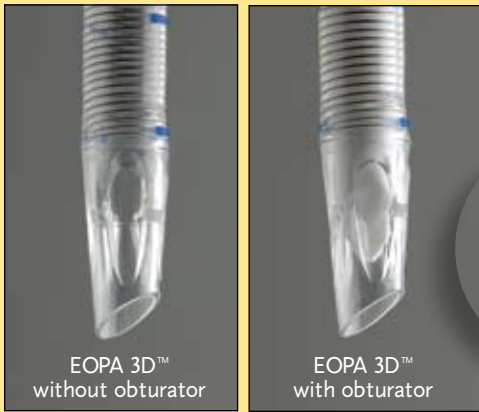
Laboratory comparison of arterial line pressures at 6 lpm\*

\* Data on file @ Medtronic  
SOFT-FLOW™ is a trademark of Terumo Cardiovascular Systems Corporation.

# EOPA 3D™ ARTERIAL CANNULAE



The EOPA 3D™ Arterial Cannulae from Medtronic features a unique tapered tip configuration that diffuses the flow through multiple outlets. The elongated wirewound body provides versatility for either minimally invasive procedures or traditional median sternotomy approaches.

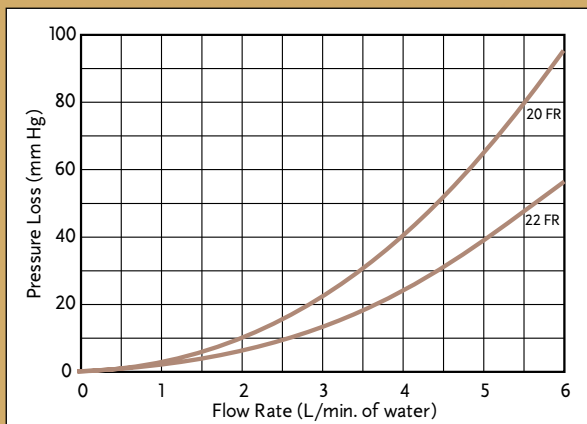


EOPA 3D™  
without obturator

EOPA 3D™  
with obturator

Features	Benefits
■ Obturator	■ Maintains hemostasis during insertion and cannula priming
■ Hemostasis Cap	
■ 3/8" vented or non-vented connector	■ Luer vent facilitates de-airing after connection
■ 13" length (33.02 cm)	■ Enables access to most areas of the aortic arch through median sternotomy or peristernotomy incisions
■ Thin wall construction	■ Maximizes flow rates
■ Wirewound body	■ Kink resistant, maximizes flexibility
■ 20 Fr. & 22 Fr. sizes (6.7 mm & 7.3 mm.)	■ Selection of sizes
■ Adjustable radiopaque suture ring	■ Allows pre-setting of insertion depth and location for ligature sutures
■ Depth marks	■ Indicate insertion depth at 1 cm intervals
■ 3D diffusion tip	■ Additional outlets for reduced velocity diffuse flow

## EOPA 3D® Arterial Cannula



## Select 3D<sup>®</sup>, Select 3D<sup>®</sup> II and EOPA 3D<sup>™</sup> Cannulae Ordering Information

### Select 3D<sup>®</sup> Cannulae

#### Dip-Molded Tip and Body

##### VENTED

Product Number	Description	Quantity
78618	18 Fr. w/3/8" connector	20/carton
78620	20 Fr. w/3/8" connector	20/carton
78622	22 Fr. w/3/8" connector	20/carton
78624	24 Fr. w/3/8" connector	20/carton

##### NON-VENTED

Product Number	Description	Quantity
78718	18 Fr. w/3/8" connector	20/carton
78720	20 Fr. w/3/8" connector	20/carton
78722	22 Fr. w/3/8" connector	20/carton
78724	24 Fr. w/3/8" connector	20/carton

### Select 3D<sup>®</sup> II Cannulae

#### Injection-Molded Tip and Dip-Molded Body

##### VENTED

Product Number	Description	Quantity
78420	20 Fr. w/3/8" connector	20/carton
78422	22 Fr. w/3/8" connector	20/carton
78424	24 Fr. w/3/8" connector	20/carton

##### NON-VENTED

Product Number	Description	Quantity
78520	20 Fr. w/3/8" connector	20/carton
78522	22 Fr. w/3/8" connector	20/carton
78524	24 Fr. w/3/8" connector	20/carton

### EOPA 3D<sup>™</sup> Cannulae

#### Diffusion Tip and Elongated Body

##### VENTED

Product Number	Description	Quantity
78220	20 Fr. w/3/8" connector	10/carton
78222	22 Fr. w/3/8" connector	10/carton

##### NON-VENTED

Product Number	Description	Quantity
78320	20 Fr. w/3/8" connector	10/carton
78322	22 Fr. w/3/8" connector	10/carton

Also available with Carmeda<sup>®</sup> BioActive Surface. Manufactured under license from Carmeda AB, Sweden. Carmeda is a registered trademark of Carmeda AB.

Carmeda Bonded models may be ordered using "CB" as a prefix to the product number.

For a listing of indications, contraindications, precautions and warnings, please refer to the Directions for Use.

This device is for single use only.

For more information, contact your local Medtronic Cardiac Surgery Sales Representative or call Customer Service toll-free at 1-800-854-3570.

#### World Headquarters

Medtronic, Inc.  
710 Medtronic Parkway  
Minneapolis, MN 55432-5604  
USA  
Tel: (763) 514-4000  
Fax: (763) 514-4879  
www.medtronic.com

Medtronic USA, Inc.  
Toll-free: 1 (800) 328-2518  
(24-hour technical support for  
physicians and medical professionals)

**Revascularization & Surgical Therapies**  
7611 Northland Drive  
Minneapolis, MN 55428-1088  
Internet: www.perfusionsystems.com  
FAX: (763) 391-9100

Customer Service and Product Orders  
Toll-free at 1-800-854-3570

#### Europe

Medtronic Europe Sàrl  
Route du Molliou 31  
CH-1131 Tolochenaz  
Switzerland  
Tel: (41 21) 802 7000  
Fax: (41 21) 802 7900  
www.medtronic.com

#### Canada

Medtronic of Canada Ltd.  
6733 Kitimat Road  
Mississauga, Ontario L5N 1W3  
Canada  
Tel: (905) 826-6020  
Fax: (905) 826-6620  
Toll-free: 1 (800) 268-5346

#### Asia Pacific

Medtronic International, Ltd.  
16/F Manulife Plaza  
The Lee Gardens, 33 Hysan Avenue  
Causeway Bay  
Hong Kong  
Tel: (852) 2891 4456  
Fax: (852) 2891 6830  
enquiryap@medtronic.com  
www.medtronic.com

#### Latin America

Medtronic USA, Inc.  
Doral Corporate Center II  
3750 NW 87th Avenue Suite 700  
Miami, FL 33178  
USA  
Tel: (305) 500-9328  
Fax: (786) 709-4244  
www.medtronic.com

UC200701639 EN  
© Medtronic, Inc. 2007  
All Rights Reserved  
Printed in USA



**Medtronic**  
Alleviating Pain · Restoring Health · Extending Life