

REF TP1000

General Description

The Warming & Cooling Therapy is a portable device that circulates mild and constant cold and heat fluids to treat and alleviate local discomfort and injuries. The temperature can be individually adjusted from + 12 °C to + 42 °C. Highly efficient electronic cooling chips with electronically controlled sensors maintain the set temperatures at a constant level.



Read the operating instruction carefully before use.
Failure to follow these instructions may cause severe injuries.

Warnings

Failure to follow may cause possible injuries to persons

- Consult with a Healthcare Professional before using this product to prevent cold or heat induced injuries.
- DO NOT use on unconscious patients.
- DO NOT use on individuals with circulatory problems, unless managed by a healthcare professional.
- DO NOT let water flow into areas of the device other than the water tank.
- DO NOT put pads under the body or put any pressure on the pads.
- DO NOT tie the pads too tightly.
- PADs are for single patient use only!
- PADs may only be used in conjunction with the TP1000 device.
- Always check pads for leakages before use.
- DO NOT obstruct the vents of the device.
- Temperatures will vary according to the room temperature and pad sizes.
- Store in a cool dry place.
- No modification of this equipment is allowed.
- Ensure that the device is disposed of safely and in accordance with all current national and international waste disposal directives.

Indications

Superficial heat compression
Superficial cold compression

Contraindications

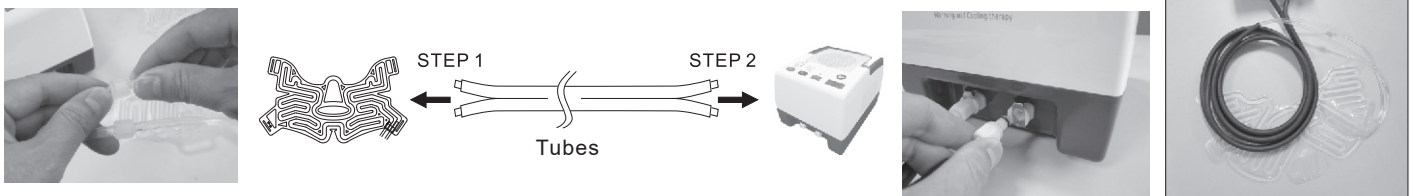
Superficial heat is contraindicated for people with acute haemorrhage, malignancy, skin irritation, acute trauma and acute inflammation. Superficial cold is contraindicated for Raynaud's disease, local ischemia, cold urticaria, vascular impairment.

Instructions for Use

1. Place the device on a stable surface and ensure that the power is off.
2. Plug the AC power cord into the wall socket and adaptor. Plug the adaptor cable into the DC socket.
3. Open the tank lid and slowly pour DISTILLED WATER into to the tank, paying careful attention to the water level.
DO NOT exceed the MAX mark.



4. Connect the tubes on the selected pad first and then install the other end to the device, ensuring that the connectors are fully snapped into the adaptor with a clicking sound.
NOTE: Please lay the pad flat in order to prevent folding and blockage of the circulating path, which could cause localized increased water pressure and lead to breakages or leaks.



5. Turn on the power switch until the light self-test is complete.
6. Select the treatment temperature from a total of four options.
7. Once the temperature is selected, choose the treatment time, and finally press START / STOP to start running.

NOTE:

It takes approximately one minute for water to be distributed throughout the entire pad before therapy begins.



8. The flashing blue light indicates that the cooler or heater is running.
9. Depress the START / STOP button again to stop operation.

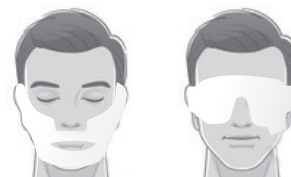
Refilling the Reservoir

If the device is being used or the pads are being installed for the first time, then water from the reservoir will be pumped into the chambers of the pad during step 7. At this moment, the device will need to be refilled with DISTILLED WATER. With the device running, pour additional DISTILLED WATER into the reservoir, ensuring that the water level is between the "MIN" and "MAX" lines.



Applying the PADS

Pads can be applied directly to skin or can be used with a thin barrier (clothing). When pads are applied directly to the skin, temperatures will be felt more intensely. If the therapy becomes uncomfortable, please remove the pad immediately and adjust the temperature. Allow the pad temperature to reset for 6-10 minutes before reapplying.



Notes

1. Use DISTILLED WATER ONLY, and pay attention the water level. DO NOT exceed the MAX level.
2. Iced water may be used to save cooling time if cooling therapy is urgently required.
3. It will take one minute to begin the alternating mode when applying contrast therapy (i.e. switching between heating/cooling modes).
4. **As the room temperature will affect the cooling capability, we strongly recommend keeping room temperature below 23 ° C for better cooling capability during use.**

Cleaning

- ⚠ **ALWAYS** power off the device and unplug the AC / DC power cords from the outlet before cleaning.
- The device can be cleaned with water or neutral disinfectant wipes.
- Pads can be cleaned with a neutral disinfectant or soapy water.
- DO NOT wash the device or hold under running water.

⚠ Caution

- Operating temperature: +10 to ~+26°C
- Relative humidity: 15%~85%RH maximum
- Atmospheric pressure : 860hPa~1060hPa

Transportation and Storage

- Temperature: +5 to ~+55°C
- Relative humidity: 10%~85%RH maximum
- Atmospheric pressure : 860hPa~1060hPa

Shelf Life

Please check the packaging label.

Specification

- Cold setting: 54° F/64° F (12 °C /18 °C)
- Heat setting: 100° F/107° F (38 °C/42 °C)
- Time setting: Continuous/15 Min./ 30 Min.
- Electric Cooling System - Ice-less technology (None Freon coolant and compressor)
- AC adapter - 100-240V 50/60Hz // DC 12V / 10A output
- Type of protection --- IP20
- Water tank capacity ---140ml
- Dimensions: 200(L) x 160(W) x 140(H)mm
- Connecting tubes --- 2meters
- The device complies with the following standards: EN 60601-1-2, EN 60601-1

Disposal

Please dispose of the device in accordance with the EC Directive —WEEE (Waste Electrical and Electronic Equipment). Please contact the local authorities responsible for waste disposal if questions arise.


Labeling Symbols

- Refer to instruction manual/booklet
- General warning sign / Caution
- Outer negative plug / Center positive plug
- Complies with EU directives
- Manufacturer
- Authorized Representative in the European Community
- Type BF applied part
- Catalog number
- Batch code
- Serial number
- Direct current
- Date of manufacture
- Medical Device


ALWAYS use the original power supply as specified by the Manufacturer

Trouble shooting

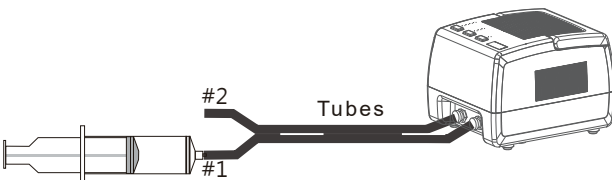
Observation	Root Cause	Recommended Action
Water is not delivered although START / STOP button has been re-pressed.	The Motor valve is stuck	See below



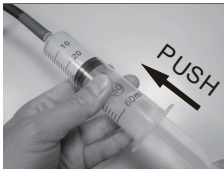
Remove the pad.



Firstly connect syringe to tube #1 with a luer adapter.



Slowly push the syringe plunger forward to inject the air in, then repeat action for tube #2. Then refer to step 4 of 'Instructions for Use' to reactivate the machine.



PUSH